



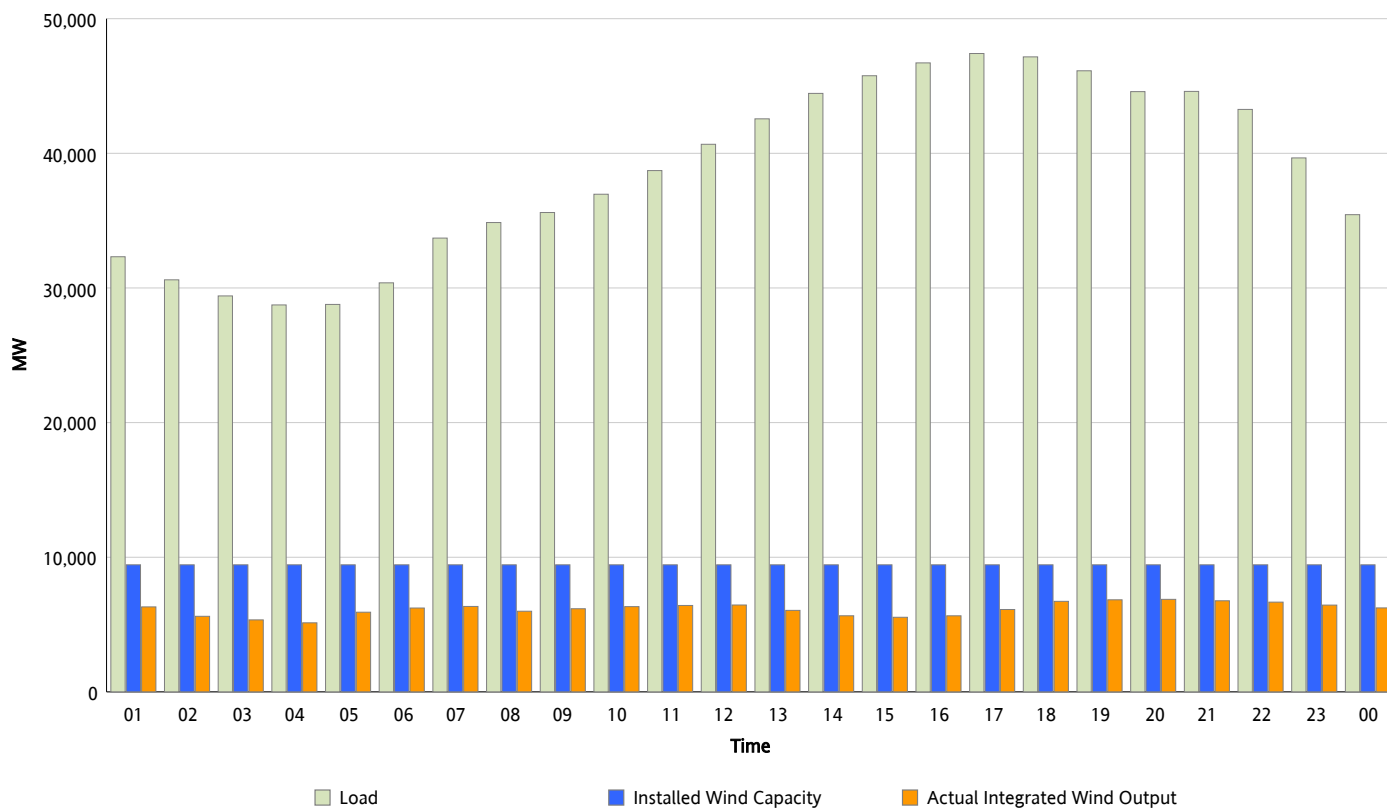
ERCOT Grid Operations

Wind Integration Report : 05/01/2012

Peak Load	47,414 MW
Load Peak Hour (HE)	17
Wind Over Peak	6,118 MW
Wind Record 04/13/12	7,925 MW
Max Wind Value*	7,067 MW
Wind Peak Time	17:50
Wind Integration %	15.05 %

Hourly Average Actual Load vs. Actual Wind Output

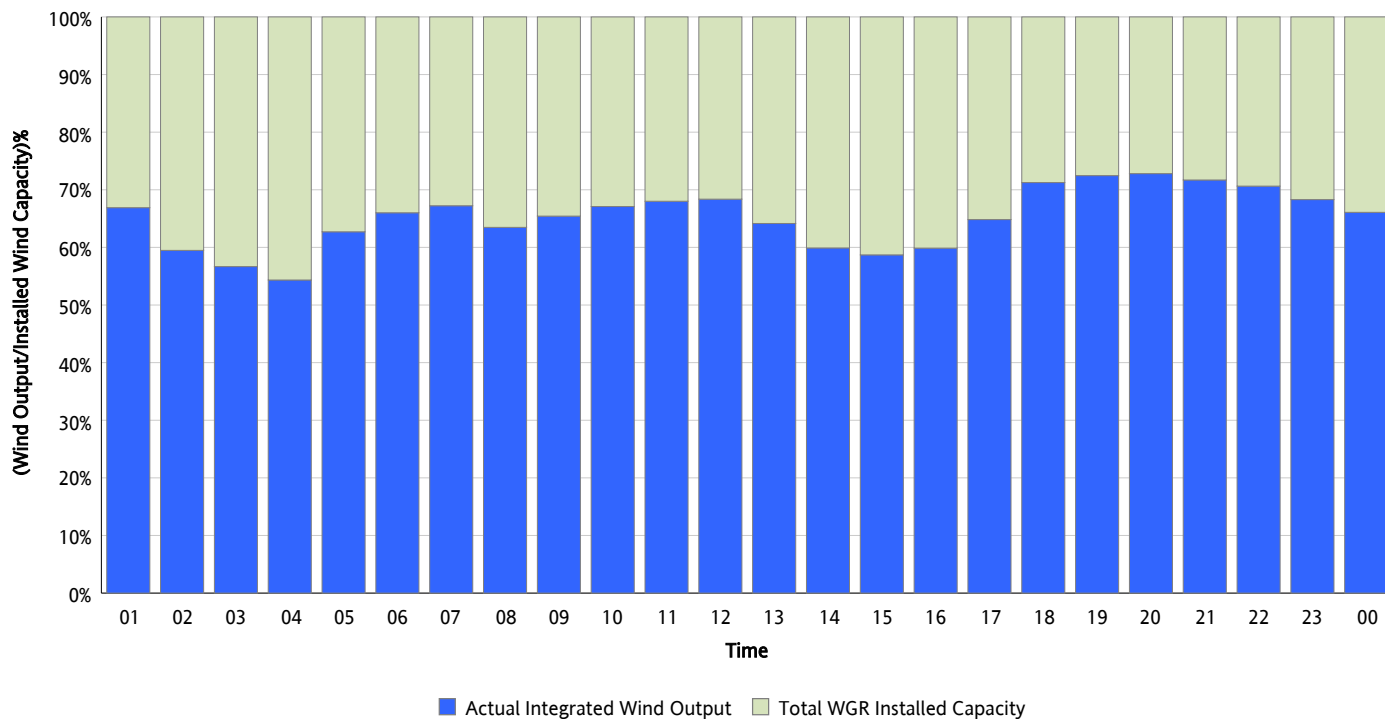
05/01/2012



* Wind Record and Wind Max represent instantaneous values and the rest of the values are integrated over the hour

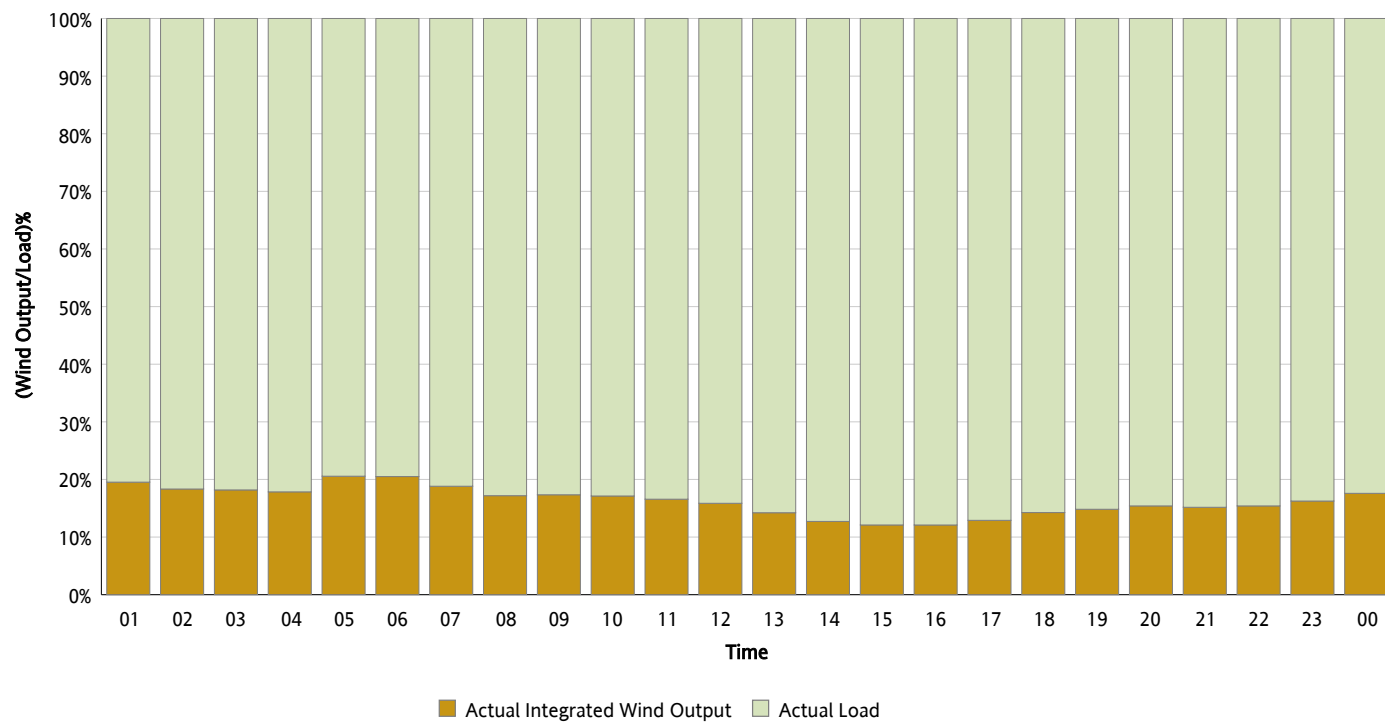
Actual Wind Output as a Percentage of the Total Installed Wind Capacity

05/01/2012



Actual Wind Output as a Percentage of the ERCOT Load

05/01/2012



ERCOT Load vs. Actual Wind Output

04/24/2012 - 05/01/2012

